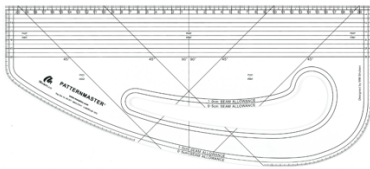


# BA (Hons) Fashion: Equipment List

You need the following 'Essential Equipment' to commence your timetabled sessions and independent study.

You will use these items on a very regular basis throughout your studies and into your future careers. It is advisable to purchase the best quality you can afford.

Recommended Suppliers: [Morplan](#) and [Eastman](#) or search on Amazon, Ebay and Etsy



Pattern Master



Tape Measure –  
centimetres / metric



Mechanical Pencil plus 2H or  
HB Leads or Regular HB / 2H  
Pencil plus Sharpener



Masking or "Magic" Tape (not  
Sellotape!)



Bradawl / Awl



Pattern Notchers



Tracing Wheel (Needle Point)



General Purpose Scissors  
for Paper



Pattern Drill



Dressmakers Shears –  
10" / 25cm



Dressmakers Pins – Extra  
Fine



Magnetic Seam Guide  
for Sewing



Chalk Pencil or “Frixon”  
Erasable Pen



Seam Ripper or Snips



Embroidery Scissors

You will also need a ‘Sewing Room Pack’ which is specifically for use with the on-campus industrial sewing machines. You may decide to acquire additional items to create a full professional kit from the start or build up as your knowledge and skills increase.

Curated ‘Packs’ and individual items are also available from Design Surgery <https://www.fcelondon.com/university-packs?category=Ravensbourne> including a discount for Ravensbourne students.

Additional art and design materials such as sketchbooks, paper and drawing media will be required throughout the course. Further details will be provided during Welcome Week.